

INSTALLATION INSTRUCTIONS

BMW X5 HOOD PROTECTOR 2004-06

PART NUMBER: HD 3F04

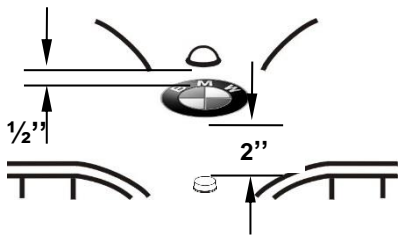
Hardware Kit

- 4 – 3M Anti-abrasion Film Pads
- 5 – Large Bumpons
- 1 – Small Bumpon
- 4 – Clip Bodies
- 4 – Pins
- 4 – #6 x 5/8" Truss Head Screws
- 4 – Nylon Washers
- 4 – 'L' Brackets
- 1 – Alcohol Wiping Pad
- 1 – Two Part Mounting pedestal – 2 total pieces, 1 is already installed on the protector

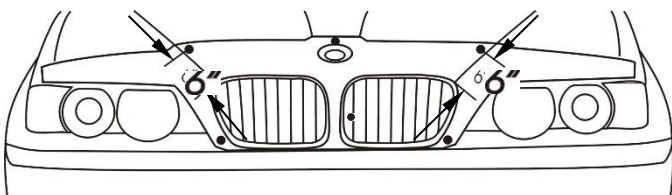
Attention: This product uses 3M adhesive products that 3M recommends installation and curing temperatures between 60°F/ 15°C and 80°F/ 27°C to allow maximum adhesion to the surface. **Failure to install this product at the proper temperature or allow adequate curing timing before use is not covered under warranty.**

Installation

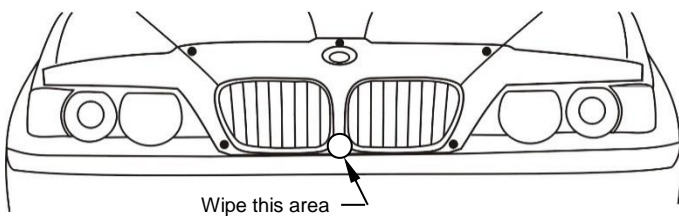
1. Be sure that the hood is clean and dry. Release the hood latch (it is not necessary to open the hood at this time). Make sure that the vehicle surfaces are adequately warm enough for the tape to adhere properly as noted above.
2. Install one large bumpon on the center line of the hood at 1/2" behind the BMW emblem, and next install one small bumpon on the center line of the hood 2" in front of the BMW emblem.



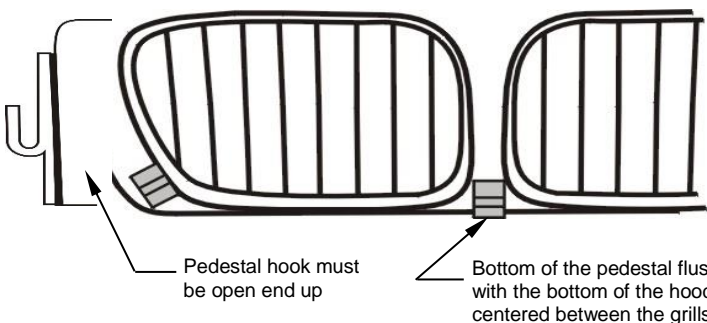
3. Install the remaining (4) four large bumpons as shown below. **Attention: The bumpons must be installed on the HOOD not the protector!!!!** If bumpons are installed on the protector they will wear through the paint.



4. Wipe the area shown below where the mounting pedestal will attach with the alcohol wiping pad. Allow to dry.

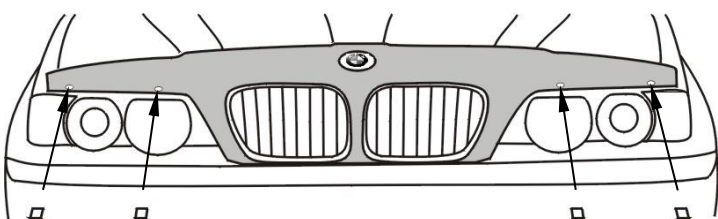


5. Peel the protective backing from the tape on the pedestal and attach it to the hood **open end up**. See below. Press down firmly on the mounting pedestal to make sure they are properly adhered to the hood.



6. Position the protector on the hood by engaging the hook on the pedestal on the protector with those on the pedestal installed on the hood. Make sure that the protector is centered and resting on the bumpons installed in Step #2 & 3. **Tip: Center the large hole in the protector over the emblem on the hood.**

7. Peel and fold an anti-abrasion film pad in half over the edge of the hood, underneath each of the bottom four (4) holes in the protector. See *Illustration below and Illustration #1 – Step 7.*



Tools Required

- Phillips Screwdriver
- Tape Measure

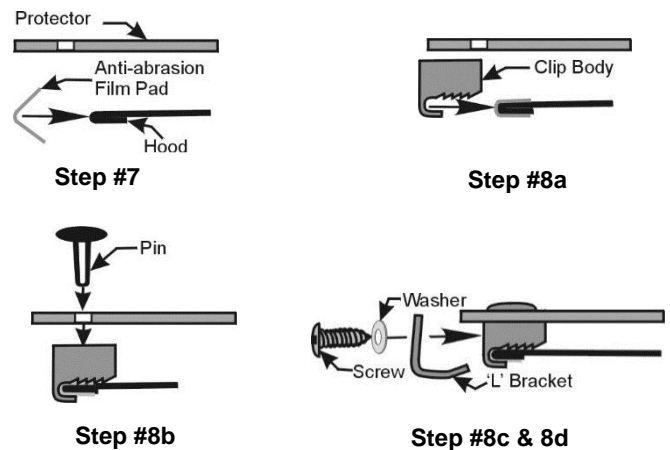
Removal

- Phillips Screwdriver

- 8a) Place a clip over each of the anti-abrasion film pads on the edge of the hood as shown below in *Illustration #1 – Step 8a.*
- 8b) Insert a pin through the protector into each of the clips. See *Illustration #1 – Step 8b.*
- 8c) Place a nylon washer onto a #6 x 5/8" screw, then insert the screw through an 'L' bracket and into the clip. See *Illustration #1 – Steps 8c & 8d.*
- 8d) Make sure all the components are well seated together, the protector is centered on the hood, then tighten the screws into the clips.
9. On some vehicles it may be necessary to adjust the hood bumpers and/or latch for proper clearance.
Note: Do not pull on the protector when opening or closing the hood.

Illustration #1 - Clip Configuration

* Patent No. 6,892,427



To Remove the Protector For Cleaning:

1. Remove the four (4) screws from the clips first, and then remove pins and the clips.
2. Slide the protector up and out of all the mounting pedestal.

To re-install:

1. Slide the protector completely into the mounting pedestal below by the grill.
2. Re-install the clips. See instruction – Step #7 & 8. **Do not over tighten the screws.**

Care Instructions

Clean the protector with a mild soap and water solution or plastic cleaner only. Do not use chemicals or solvents.

Periodically check to make sure that the bumpons are in place, and the protector is secure. **Avoid using automatic car washes.** Do not pull on the protector when opening or closing the hood.