

**KIT CONTENTS:**



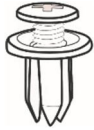
Large anti-abrasion film pads (2)

Automotive surface cleaner (1)



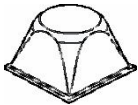
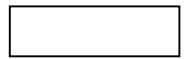
Metal mounting bracket Type A (2)

Screws (4)



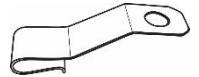
Push type retainer (4)

Small anti-abrasion film pads (2)



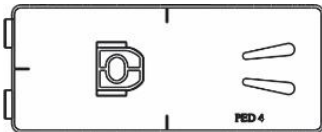
Square bumpons (2)

Metal mounting bracket Type B (2)



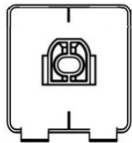
Round bumpons (2)

Pins (4)

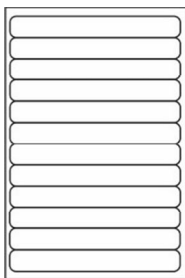


Large adhesive pedestals (2)

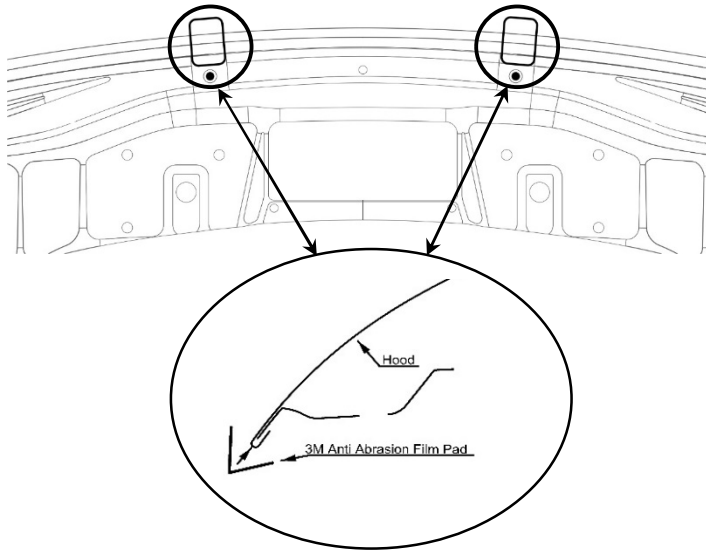
Hood deflector (1)



Small adhesive pedestals (2)



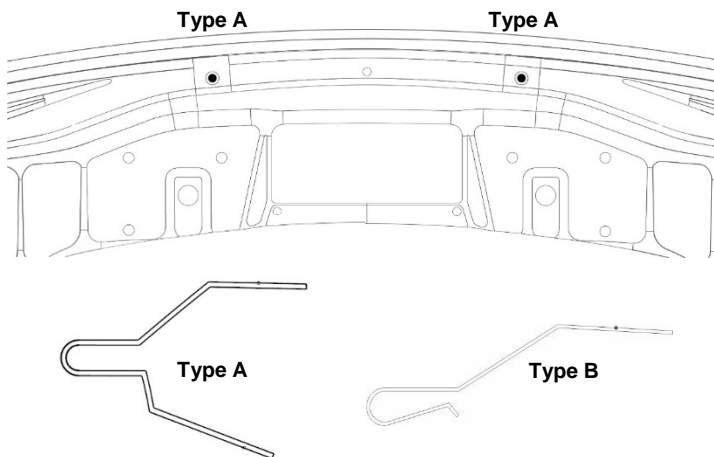
Tape strip sheet (1)



**Looking at underside of the hood**  
**anti-abrasion film pad locations**

1. Be sure that the hood is clean and dry inside and out.
  2. Open the hood of the vehicle.
- ⚠** Peel and fold anti-abrasion film pads in half over the edge of the hood, in the two (2) locations shown.

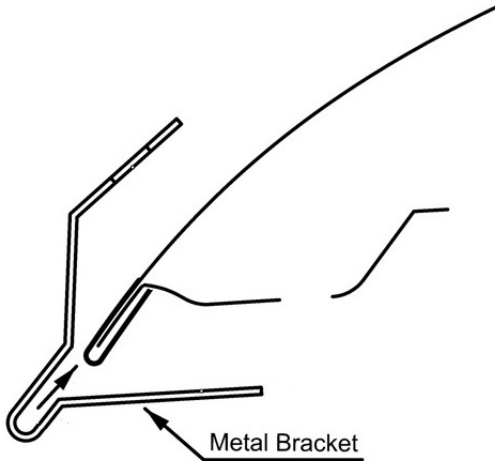
**Metal mounting bracket guide**



**NOTE:**  
**Use the metal mounting bracket guide** to determine where the metal mounting brackets are installed in the following steps.

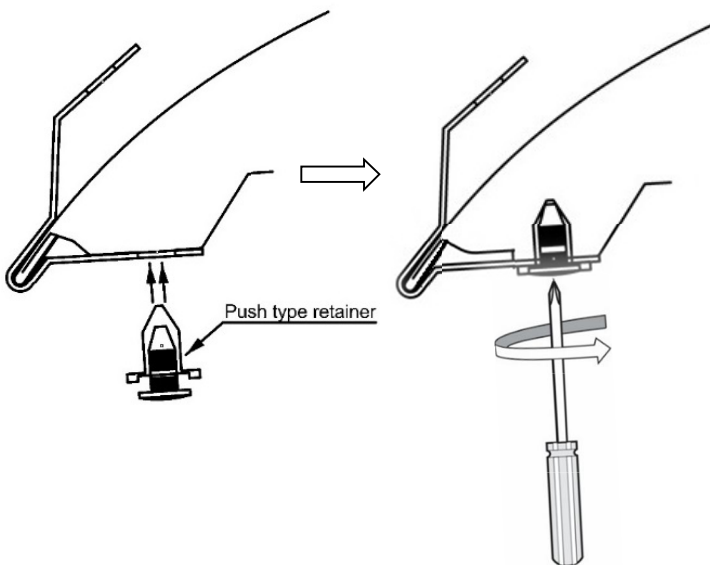
- Install the two (2) Type A metal mounting brackets on the hood edge over the anti-abrasion pads.

Align the hole in the bottom leg of the bracket with the round hole in the hood.



- Insert a push type retainer through the Type A metal mounting bracket, and into the hood.

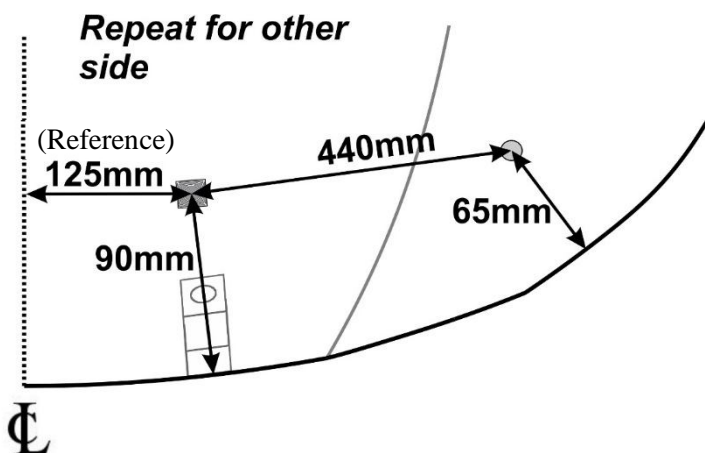
**!** Ensure the leg of the bracket is well seated against the surface of the hood and **push the center pin of the retainer assembly using a #2 Phillips screwdriver followed by tightening 90 degrees** to fully engage the retainer into the hood and lock it into place.

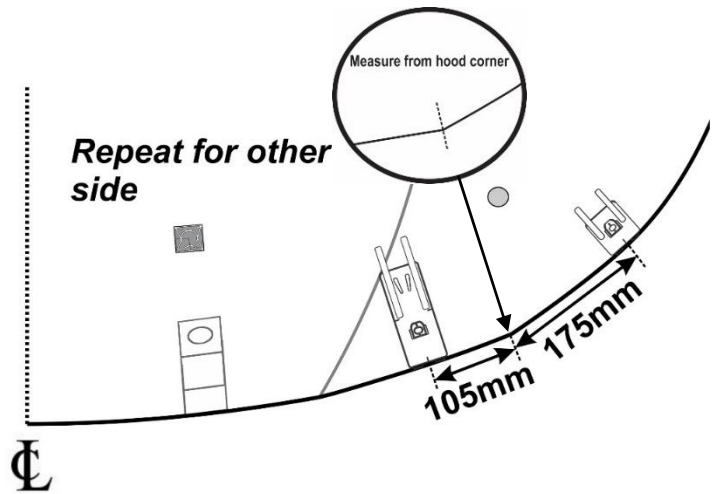


- Install the four (4) bumpons in the locations shown.

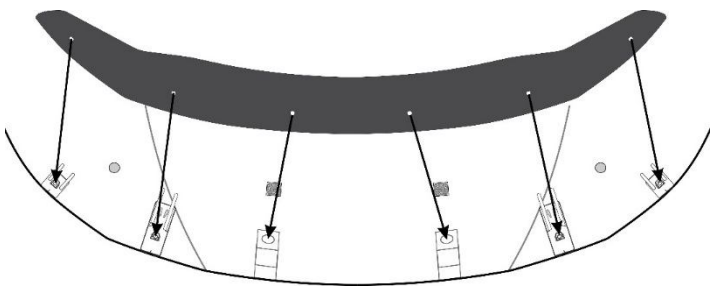
**!** **ATTENTION:** Bumpons must be installed on the hood, not on the hood deflector!!! If the bumpons are installed on the hood deflector, they may wear through the vehicle paint.

**NOTE:** Locate the square bumpon using the center line of the Type A metal mounting bracket.

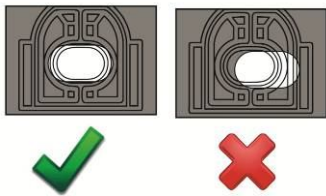




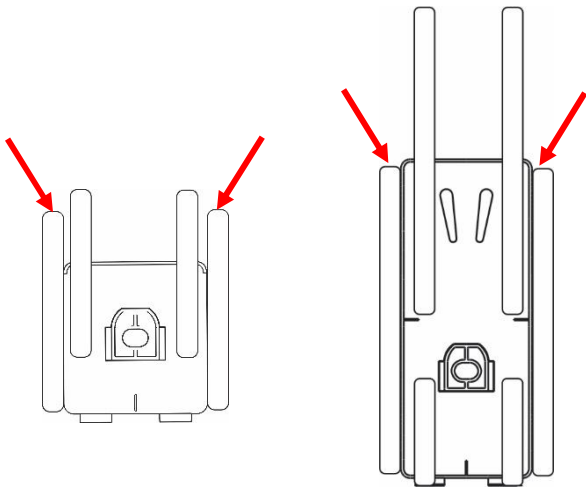
6. Dry fit the adhesive pedestals using the supplied tape strips or masking tape to temporarily hold them in position.

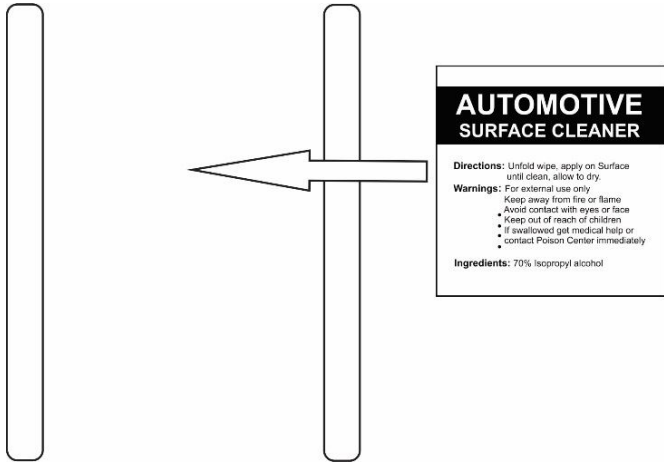


7. Place the hood deflector temporarily onto the Type A metal mounting brackets and align the holes in the hood deflector with the holes in the metal brackets. This will allow for checking the position of the adhesive pedestals and any readjustments if necessary.




8. Remove the hood deflector and outline the perimeter of the adhesive pedestals with masking tape or tape strips to help with final installation.

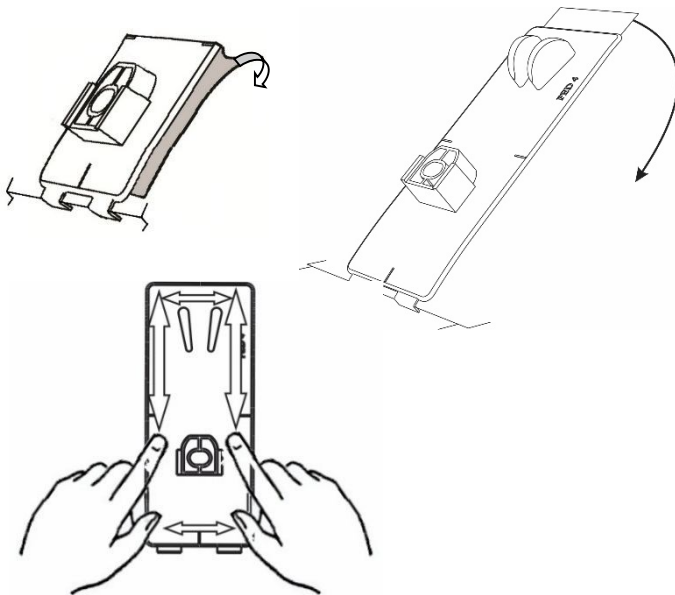




- Remove the adhesive pedestals and thoroughly clean the outlined area with automotive surface cleaner. Wipe dry with a clean cloth or paper towel. This will insure all wax, finger prints, and oils are removed from the hood surface in the bonding area.


**IMPORTANT:**

 Proper preparation of the hood surface will ensure maximum adhesive bond.



- Remove the protective backing from the adhesive on the pedestals and install on the hood surface.


**CAUTION:**

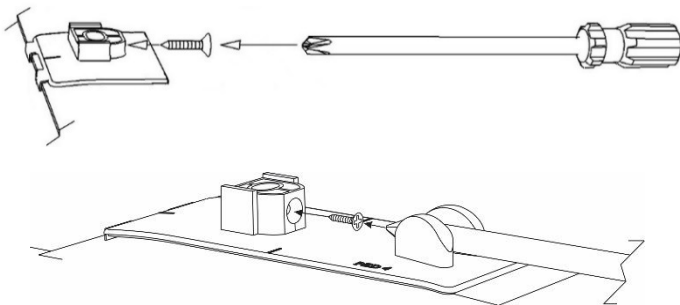
 Avoid contaminating the adhesive surface.

**TIP:**

Hook the fingers on the pedestal over the hood edge and rotate the unit into position. After installation, remove the masking tape or tape strips and “wet out” the adhesive to the hood surface by applying pressure with your thumb around the surface of the pedestals.


**IMPORTANT:**

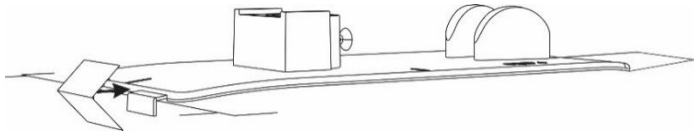
 “Wetting out” of the adhesive pedestals will ensure maximum adhesive bonding.



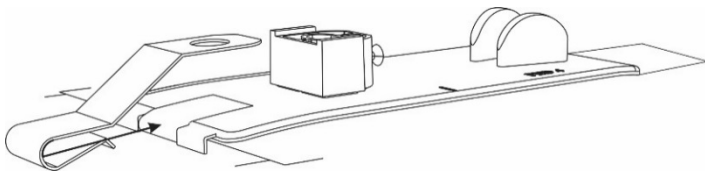
- Start a screw into each adhesive pedestal a few turns.

**NOTE:**

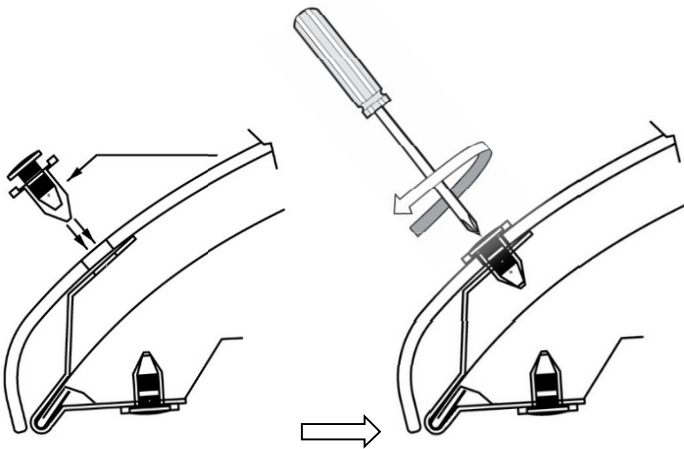
 The tip of the screw must not protrude into the hole where the attachment pin will install later.



12. Peel and fold a small anti-abrasion film pad in half over the hood edge between the fingers of each large adhesive pedestal.




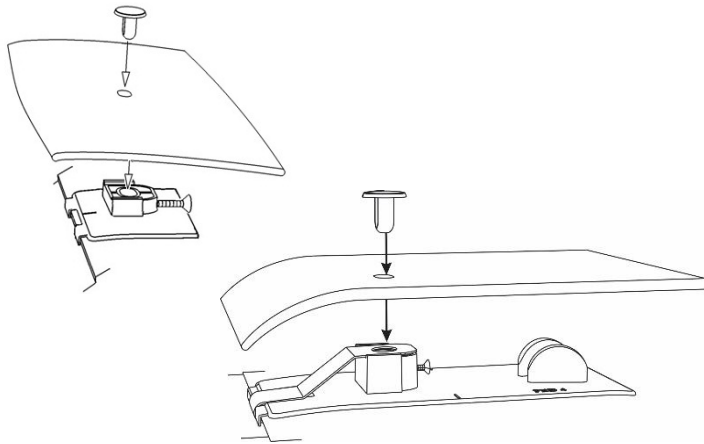
13. Push a Type B metal mounting bracket over the hood edge on top of the anti-abrasion pad installed in the previous step. Ensure the bracket is fully engaged over the hood edge and the hole in the bracket is aligned with the hole in the large adhesive pedestal.



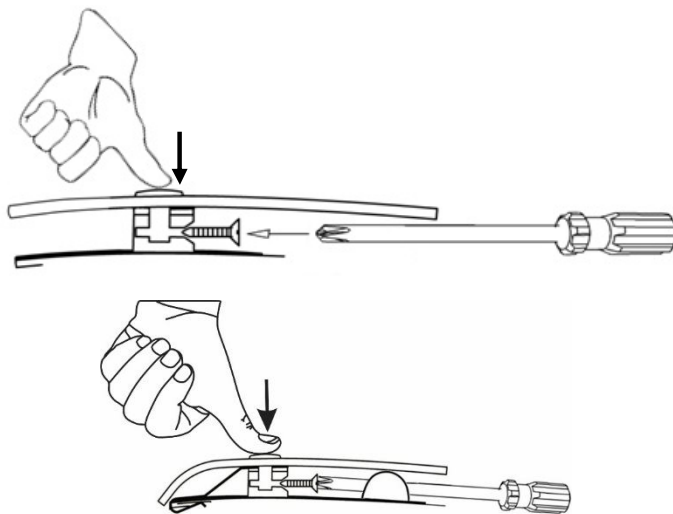
14. Place the hood deflector on the hardware mounted to the hood and align the two (2) holes in the hood deflector with the holes in the Type A metal mounting brackets.

Insert a push type retainer through the hole in the hood deflector and into the bracket.

-  Ensure the hood deflector is well seated against the metal bracket and **push the center pin of the retainer assembly using a #2 Phillips screwdriver followed by tightening 90 degrees** to fully engage the retainer into the bracket and lock it into place.




15. At the adhesive pedestal locations, drop a pin through the hood deflector and into the pedestal.



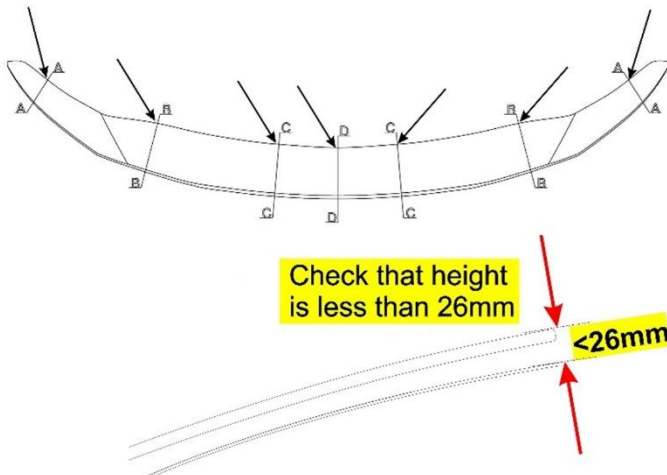
16. Tighten the screw while maintaining slight pressure on the pin, to ensure proper seating of the components.

**CAUTION:**

 Use care to avoid damaging the vehicle surface while tightening the screws.

**NOTE:**

Proper installation of the adhesive pedestal system requires the use of a Phillips #2 screwdriver (preferably with a long shaft). Use of the correct screwdriver will facilitate a trouble-free installation. Do not attempt to use a Phillips #1 screwdriver or smaller, or any type of electric screwdriver.




17. After installing the hood deflector, check to ensure that the height along the trailing edge to the hood does not exceed 26 mm.

If measured heights are more than allowed, please double check brackets, adhesive pedestals, and bumpon locations.


If locations for all attachments are correct, but the heights exceed the specified amount, please file for parts exchange under warranty.

On some vehicles, it may be necessary to adjust the hood bumpers and/or latch for proper clearance.

**WARNING:**

 Failure to perform this step may result in hood deflector interference with TSS.

**CAUTION:**

 Do not expose the vehicle/hood deflector to

---

extreme environments (weather) or car washes for a 24-hour period following the installation to allow the adhesive pedestals sufficient time to reach full bonding strength.

**CARE INSTRUCTIONS:**

Clean the hood deflector with a mild soap and water solution or plastic cleaner only.

Do not use chemicals or solvents.

**Periodically check to make sure the hood deflector is secure.**

**Avoid using automatic car washes.**

Do not pull on the hood deflector when opening or closing the hood.